

TO: ALL 6300 Engineers
 CC - TECHNICAL SUPPORT DEPT

Ref: Techbul88
Date: 9th Aug 2002

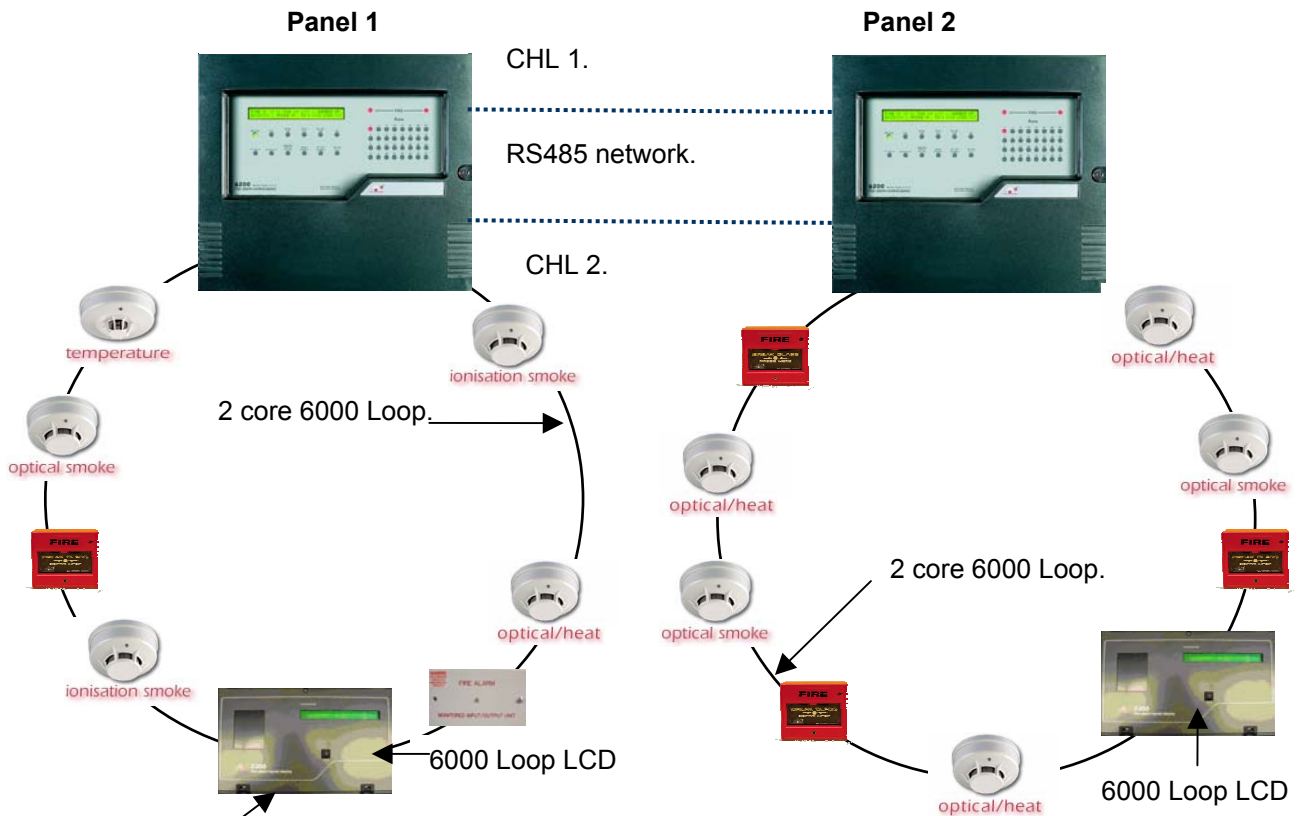
FROM: GAWIN DAVIES.

SUBJECT: 6300 Loop Powered LCD

6300 Loop Powered LCD

Protec fire detection has developed a new 6000 product, the '6000 Loop Powered LCD'. The '6000 Loop powered LCD' has been developed to allow a repeat LCD to be connected onto a 6000 Loop without the need to connect either a 24 volt supply or RS485 network. At present only the 6200 and 6300 will support the 'Loop LCD', the X400 will support this 'Loop LCD' in the future. Technical Bulletin No 88 details the new product.

Diagram 1 – 6300 Overview (with Loop LCD).



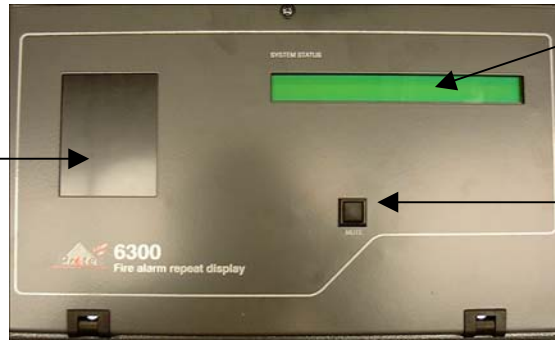
6000 Events
 The 6000 Loop LCD will display Fires, Faults and Isolations for all events on the 6300 network. The LCDs are configured for displaying all events as factory default settings. An option for filtering these events will be available in future software.

Diagram 2 – LCD front view.

LED indication.

Three LED indications:-

- FIRE
- FAULT
- SUPPLY HEALTHY



LCD Display.

80 Character display.
(40 Characters used for displaying device text).

Mute control.

Control button for muting events.

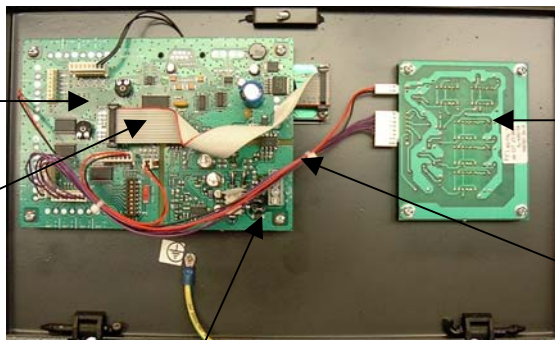
Diagram 3 – LCD PCB view.

6000 Single address controller PCB.

Main control PCB for the 'Loop LCD'

LCD Ribbon.

Ribbon cable connection from LCD and single address controller PCB.



LED display PCB.

PCB for the three LED indicators

Interconnection.

Connection between LED driver and single address controller.

Loop Connection

PCB Loop terminal connections. (To provide easy termination a terminal block will be provided on the rear LCD back-box, rather than connecting directly onto the PCB)

Table 1.0 – Technical Specifications.

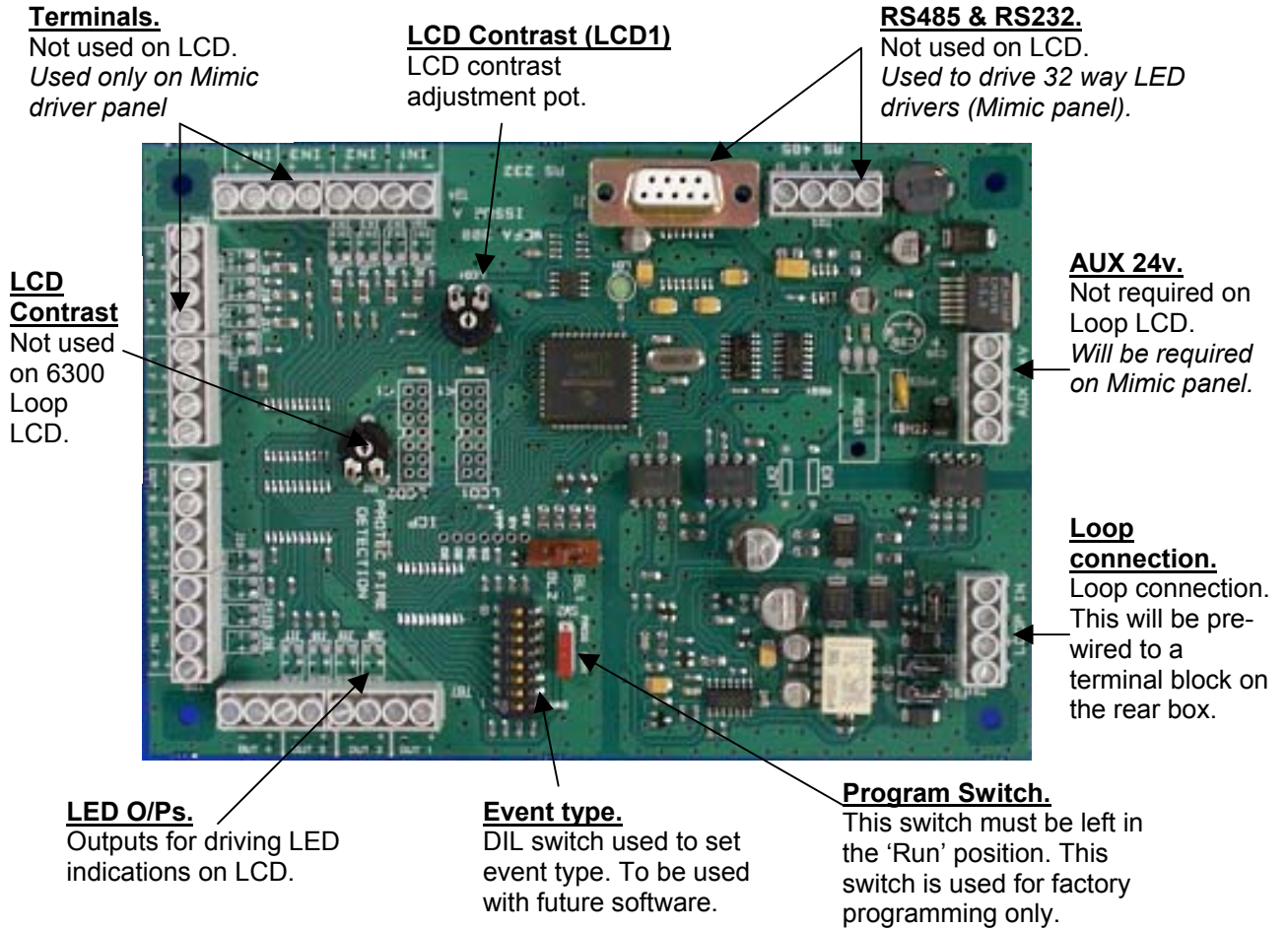
Details	Specification
Dimensions (mm)	360w x 215h x 47d
Power supply	Loop Driven
Standby load (no events)	25mA
Alarm load	55mA
Loop address	Utilises 1 x Loop address number
Loop isolator	Fitted as standard
Loop Current	Max 600mA per Loop
Device Type	49 (Hex)

Table 2.0 – Software Versions.

Details	Specification
6300 Panel software	Ver 4.42 (6300) or Ver 3.42 (6200)
6300 Windows software	Ver 3.00G
6000 Loop Driver Software	Ver 3.12
6000 Loop LCD	TBA

Diagram 4 – 6000 Single Address Controller PCB.

The '6000 Single address Controller PCB' is used on the 'Loop LCD' and has also been designed to operated a future 'Loop Mimic'. Therefore when used on the 'Loop LCD' several of the terminals / components are not used, as these are for the future 'Mimic driver' etc.



Should you require any further technical advice regarding this subject, please contact a member of the '**Technical Support team**' on ext (01282) 717444, who will be pleased to provide you with both the necessary software and advice.



Gawin Davies
Technical Support Manager